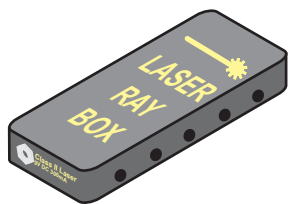


Ray Optics Laser System

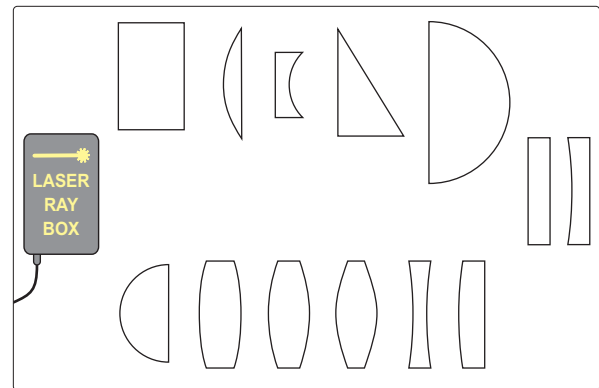
SE-8506

Important

See Product Operators Manual for all user and Safety Information.



SE-8505 Ray Box



SE-8506 System

Included Equipment

Laser Ray Box, SE-8505

9-volt Power Supply

Also Included in SE-8506 System

Display Board for magnetic components

14 Optical Components, including lenses and mirrors

6 Optical Instrument Templates

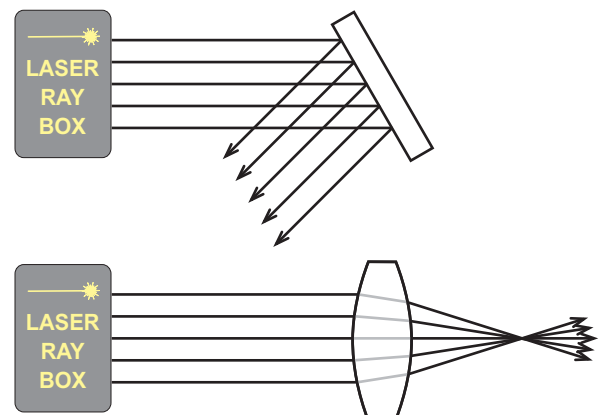
Setup

Connect the 9-volt power supply to the power receptacle on the bottom edge of the Laser Ray Box.

All components of the system have a magnetic backing for use with the included display board. Place the Laser Ray Box and other components on the board in the desired locations.

Reflection and Refraction

Using the Laser Ray Box and the optical components included in the system, students can discover the concepts of reflection and refraction.

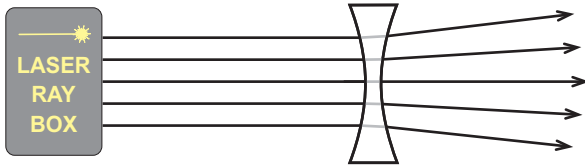
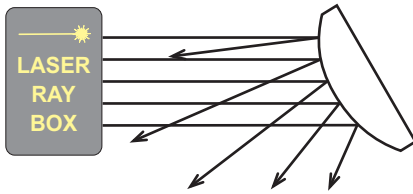


Introduction

The PASCO Ray Optics Laser System is designed for simple and clear demonstrations of geometric optics principles. Five diode lasers housed in the Laser Ray Box produce easily visible, parallel “light rays” which can be directed through a variety of simple and complex optical instruments. Most of these investigations can be conducted under normal room-lighting conditions.

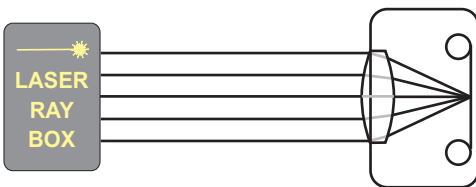
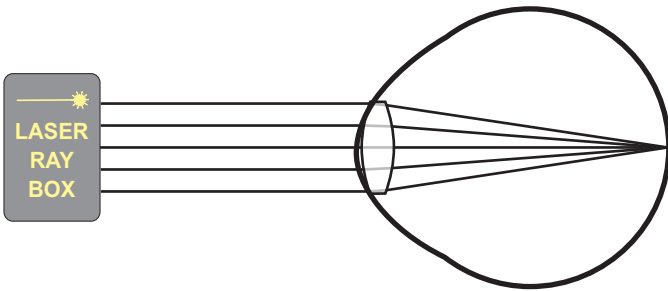
Lens and Mirror Properties

Students can experiment to discover relationships between the shape of a mirror or lens and its optical properties.



Optical Devices

Combining the Laser Ray Box, optical components, and optical instrument templates, students can explore the inner workings of devices such as the human eye and camera.



Technical Support

For assistance with any PASCO product, contact PASCO at:

Address: PASCO scientific
10101 Foothills Blvd.
Roseville, CA 95747-7100

Phone: 916-786-3800 (worldwide)
800-772-8700 (U.S.)

Fax: (916) 786-7565

Web: www.pasco.com

Email: support@pasco.com

Limited Warranty

For a description of the product warranty, see the PASCO catalog.

Copyright

The PASCO scientific 012-07770B *Ray Optics Laser System Instruction Sheet* is copyrighted with all rights reserved. Permission is granted to non-profit educational institutions for reproduction of any part of this manual, providing the reproductions are used only in their laboratories and classrooms, and are not sold for profit. Reproduction under any other circumstances, without the written consent of PASCO scientific, is prohibited.

Trademarks

PASCO is a registered trademark of PASCO scientific, in the United States and/or in other countries. All other brands, products, or service names are or may be trademarks or service marks of, and are used to identify, products or services of, their respective owners. For more information visit www.pasco.com/legal.