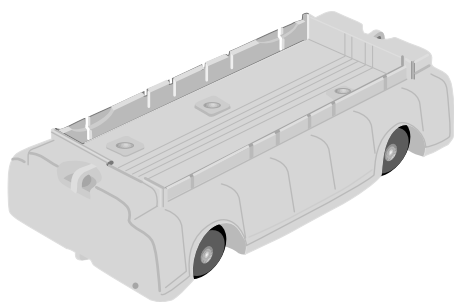


Instruction Sheet for the PASCO Model ME-6951

GOcar



Introduction

The PASCO ME-6951 is an excellent, economical car for the study of motion and its causes. It features spring-loaded wheels to prevent damage from drops. Since precision ball bearings virtually eliminate friction, student misconceptions caused by “invisible” frictional forces can be overcome. In addition, the GOcar’s molded polycarbonate body insures that it will endure the rigors of classroom use. Each end of the car has two hooks, one on the top and bottom, for the attachment of strings or springs.

The GOcar was designed to be compatible with virtually all dynamics cart accessories and PASCO’s dynamics tracks. Three threaded holes are provided in the bed of the car for the attachment of accessories. See PASCO’s physics catalog for a complete listing of compatible accessories.

NOTE: For best results, measure the mass of the cart with an accurate balance or scale.

Equipment

INCLUDED

- GOcar, ME-6951

OPTIONAL EQUIPMENT

- PASCO Accessories available for use with GOcar, please see current catalog.
- PASCO Dynamics Track

WHEEL/AXLE REPLACEMENT SETS, ME-6957

ME-6957 can be purchased separately and installed in the GOcar with the following instructions:

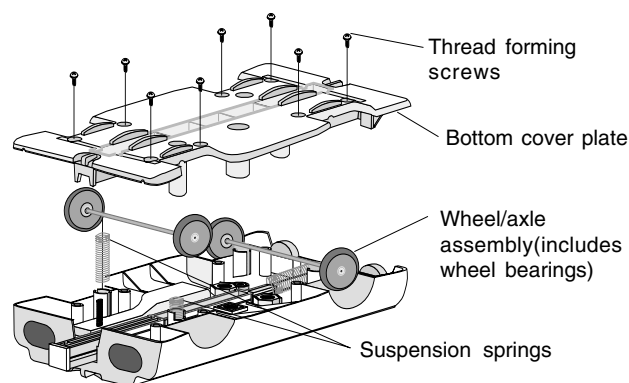
1. Using a #1 Phillips screwdriver, loosen the screws and remove the bottom cover plate.

NOTE: The screws that connect the two halves of the PAScar are thread-forming screws and may require substantial force to remove and reinstall.

2. With the car on a stable support, gently lift the wheel assemblies from the plastic grooves.

NOTE: Be sure to keep the components, such as springs and nuts in their proper orientation. Rearranging or moving these items could change the operational capability of the PAScar.

3. Place the new wheel/axle assemblies over the suspension springs.
4. Place the bottom plastic cover over the wheel/axle assemblies, such that the vertical grooves on the cover align over the axles. Align the bottom cover flush with the frame.



© 2000 PASCO scientific

Copyright, Warranty and Equipment Return

Please—Feel free to duplicate this manual subject to the copyright restrictions below.

Copyright Notice

The PASCO scientific *Model ME-6951 GOcar* manual is copyrighted and all rights reserved. However, permission is granted to non-profit educational institutions for reproduction of any part of this manual providing the reproductions are used only for their laboratories and are not sold for profit. Reproduction under any other circumstances, without the written consent of PASCO scientific, is prohibited.

Limited Warranty

PASCO scientific warrants this product to be free from defects in materials and workmanship for a period of one year from the date of shipment to the customer. PASCO will repair or replace, at its option, any part of the product which is deemed to be defective in material or workmanship. This warranty does not cover damage to the product caused by abuse or improper use. Determination of whether a product failure is the result of a manufacturing defect or improper use by the customer shall be made solely by PASCO scientific. Responsibility for the return of equipment for warranty repair belongs to the customer. Equipment must be properly packed to prevent damage and shipped postage or freight prepaid. (Damage caused by improper packing of the equipment for return shipment will not be covered by the warranty.) Shipping costs for returning the equipment, after repair, will be paid by PASCO scientific.

NOTE: NO EQUIPMENT WILL BE ACCEPTED FOR RETURN WITHOUT AN AUTHORIZATION.

Equipment Return

Should this product have to be returned to PASCO scientific, for whatever reason, notify PASCO scientific by letter or phone BEFORE returning the product.

Upon notification, the return authorization and shipping instructions will be promptly issued.

When returning equipment for repair, the units must be packed properly. Carriers will not accept responsibility for damage caused by improper packing. To be certain the unit will not be damaged in shipment, observe the following rules:

- The carton must be strong enough for the item shipped.
- Make certain there is at least two inches of packing material between any point on the apparatus and the inside walls of the carton.
- Make certain that the packing material cannot shift in the box, or become compressed, thus letting the instrument come in contact with the edge of the box.

Address: PASCO scientific
 10101 Foothills Blvd.
 P.O. Box 619011
 Roseville, CA 95678-9011