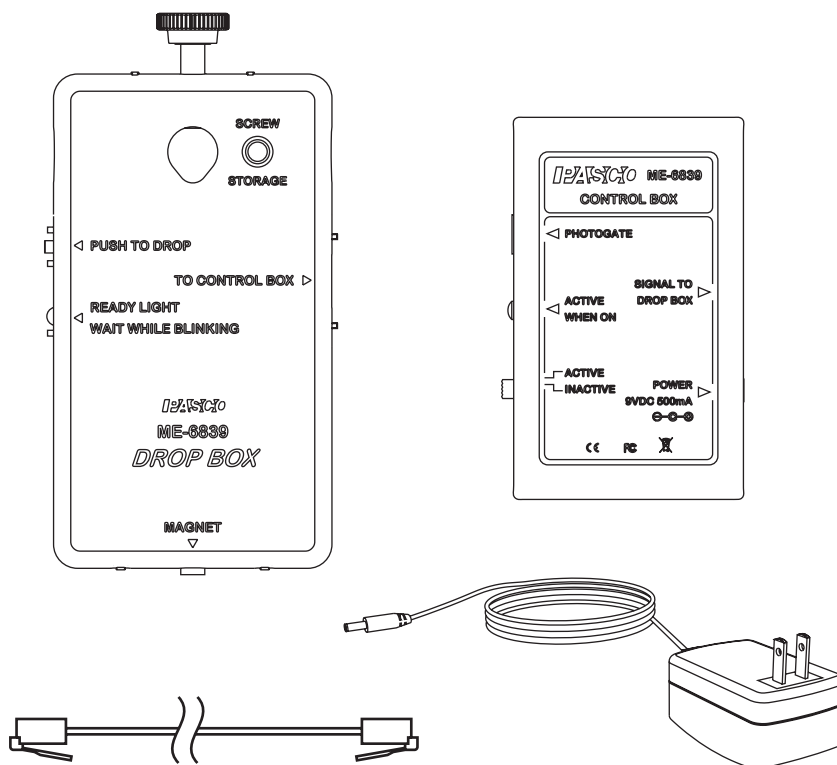


# Drop Box

ME-6839



Included Equipment	Part Number
Drop Box, main unit	003-09468
Control Box	003-09471
AC Adapter	540-007 (120 VAC) 540-027 (230 VAC)
Cable (7.6 m length, 6P4C RJ-11 connectors)	516-011

## Introduction

The PASCO Drop Box magnetically suspends a metal object and drops it when externally triggered. The triggering device can be a photogate (such as PASCO part ME-9498A) or a push-button timer switch (PASCO part ME-9819). You can also trigger it without an external device by pressing a built-in button. The Drop Box is designed for use with PASCO sys-

tems such as the ME-6853 Shoot-the-Target Accessory and the ME-9889 Discover Free Fall System.

The Drop Box holds the object with a permanent magnet. To cause the object to drop, current flows through a coil canceling the magnetic field.

## Equipment Set-up

For set-up instructions specific to the Discover Free Fall System or Shoot-the-Target Accessory, refer to the manuals included with those systems.

1. Connect the included AC Adapter to the **POWER** jack on the control box.
2. Connect a photogate or timer switch to the **PHOTO-GATE** port on the control box. (You can skip this step if you plan to use only the **PUSH TO DROP** button on the drop box.)
3. Use the included cable to connect the **SIGNAL TO DROP BOX** jack on the control box to the **TO CONTROL BOX** jack on the drop box.
4. Mount the drop box on a horizontal support rod (see Figure 1), or remove the thumbscrew and attach the drop box magnetically to a steel part of the ceiling (see Figure 2).

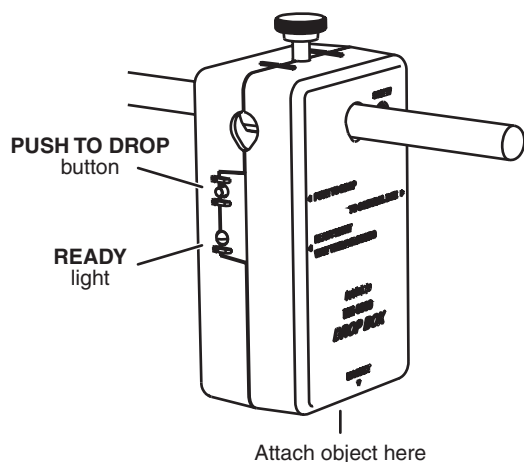


Figure 1: Drop box mounted on horizontal rod

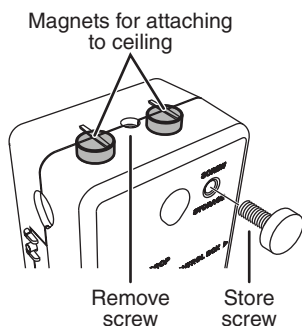


Figure 2: Location of magnets for attaching to ceiling

5. Stick a ball (from the ME-9889 Discover Free Fall System), target (from the ME-6853 Accessory), or similar object to the magnet on the underside of the drop box.
6. To make the object drop, block the photogate or push the timer switch *or* press the **PUSH TO DROP** button on the drop box.

Note the **READY LIGHT** on the drop box. After the drop box is triggered, the light blinks for a few seconds to indicate that the drop box is recharging. Wait until the light glows steadily before triggering the drop box again.

If you are using a photogate, you may want to disable it to prevent unwanted triggering. Set the **ACTIVE/INACTIVE** switch on the control box to **INACTIVE** to disable the trigger.

## Technical Support

For assistance with any PASCO product, contact PASCO at:

Address: PASCO scientific  
10101 Foothills Blvd.  
Roseville, CA 95747-7100

Phone: 916-786-3800 (worldwide)  
800-772-8700 (U.S.)

Fax: (916) 786-7565

Web: [www.pasco.com](http://www.pasco.com)

Email: [support@pasco.com](mailto:support@pasco.com)

### Limited Warranty

For a description of the product warranty, see the PASCO catalog.

### Copyright

The PASCO scientific 012-09576A *Drop Box Instruction Manual* is copyrighted with all rights reserved. Permission is granted to non-profit educational institutions for reproduction of any part of this manual, providing the reproductions are used only in their laboratories and classrooms, and are not sold for profit. Reproduction under any other circumstances, without the written consent of PASCO scientific, is prohibited.

### Trademarks

PASCO, and PASCO scientific are trademarks or registered trademarks of PASCO scientific, in the United States and/or in other countries. All other brands, products, or service names are or may be trademarks or service marks of, and are used to identify, products or services of, their respective owners. For more information visit [www.pasco.com/legal](http://www.pasco.com/legal).