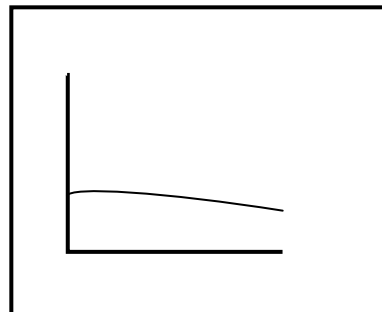
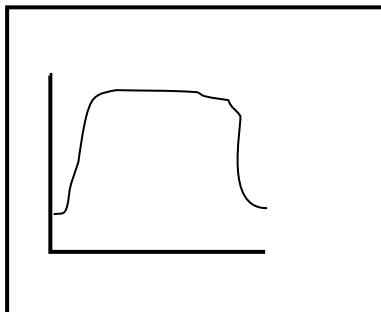
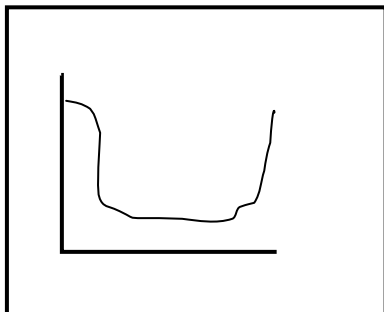
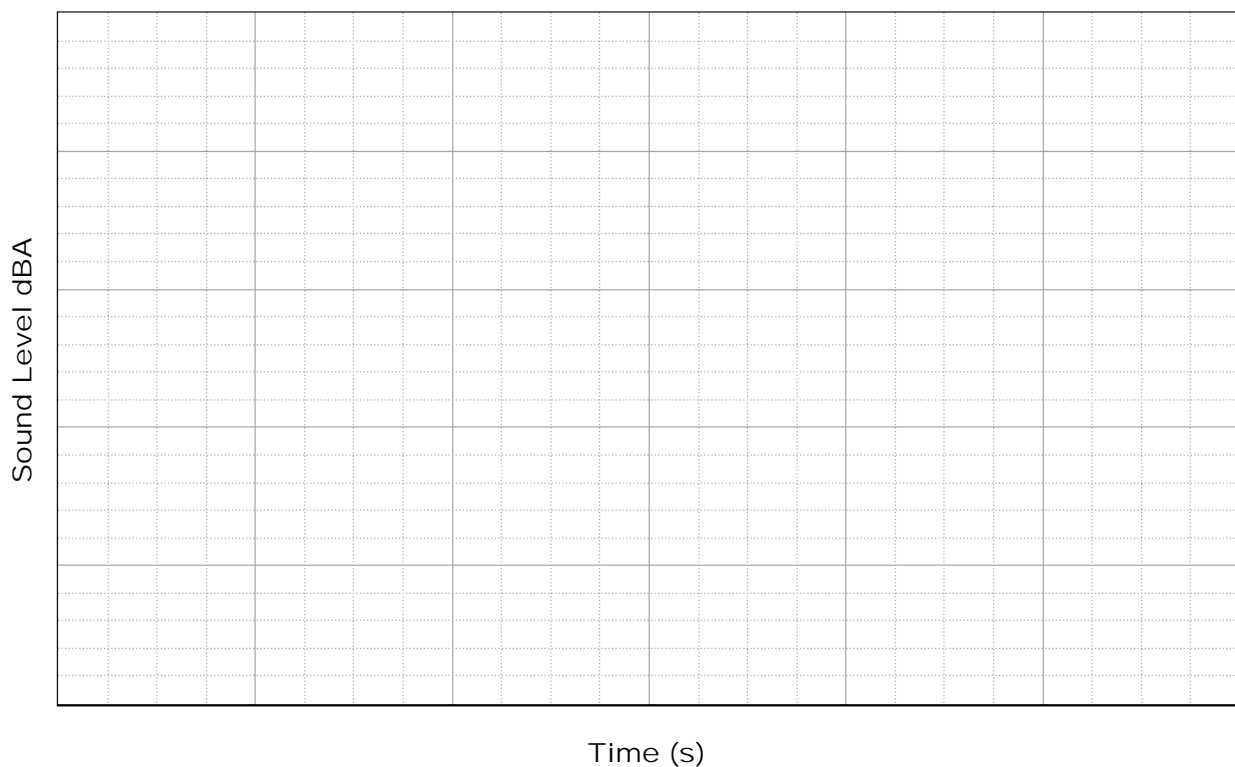


1. Predict: Circle the picture you think best shows what the graph of louder humming will look like compared to softer humming.

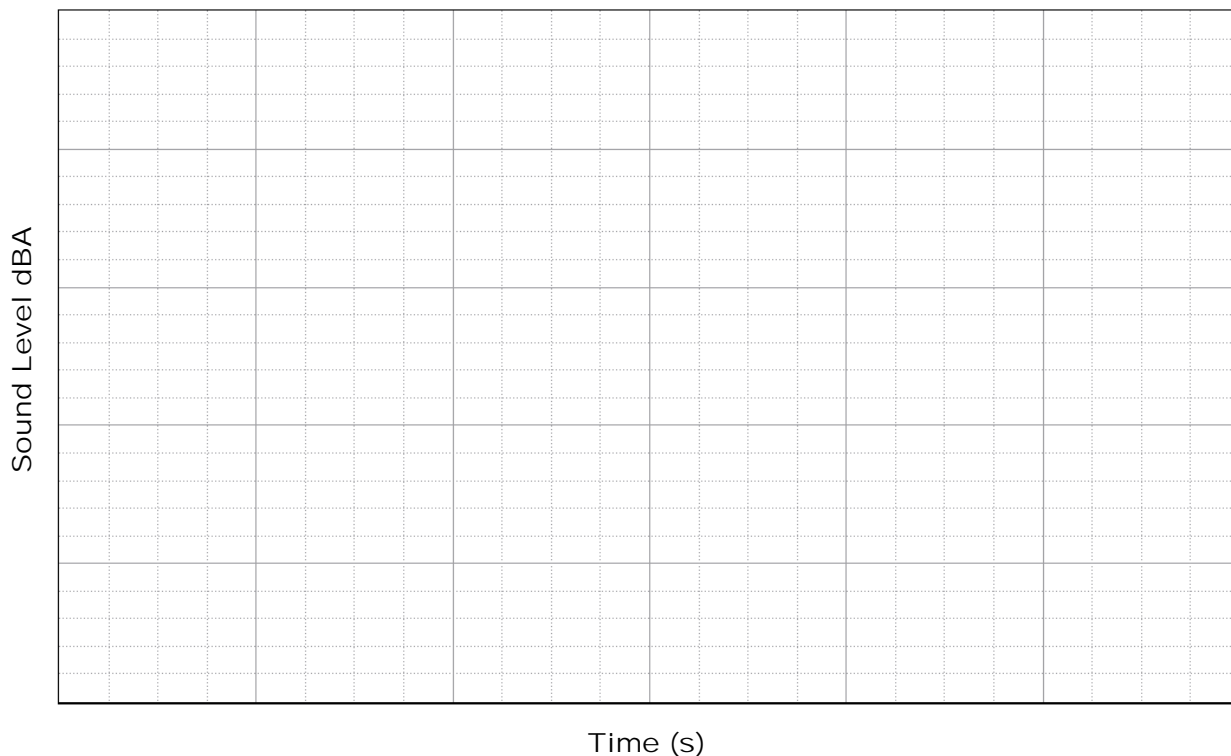


2. Draw the graph that shows the results from humming with an open mouth and a closed mouth:

Humming with Mouth Open



Humming with Mouth Closed



3. Sound level with sound tube: _____

Sound level without sound tube: _____

4. Draw a diagram to show how the sound tube works:

